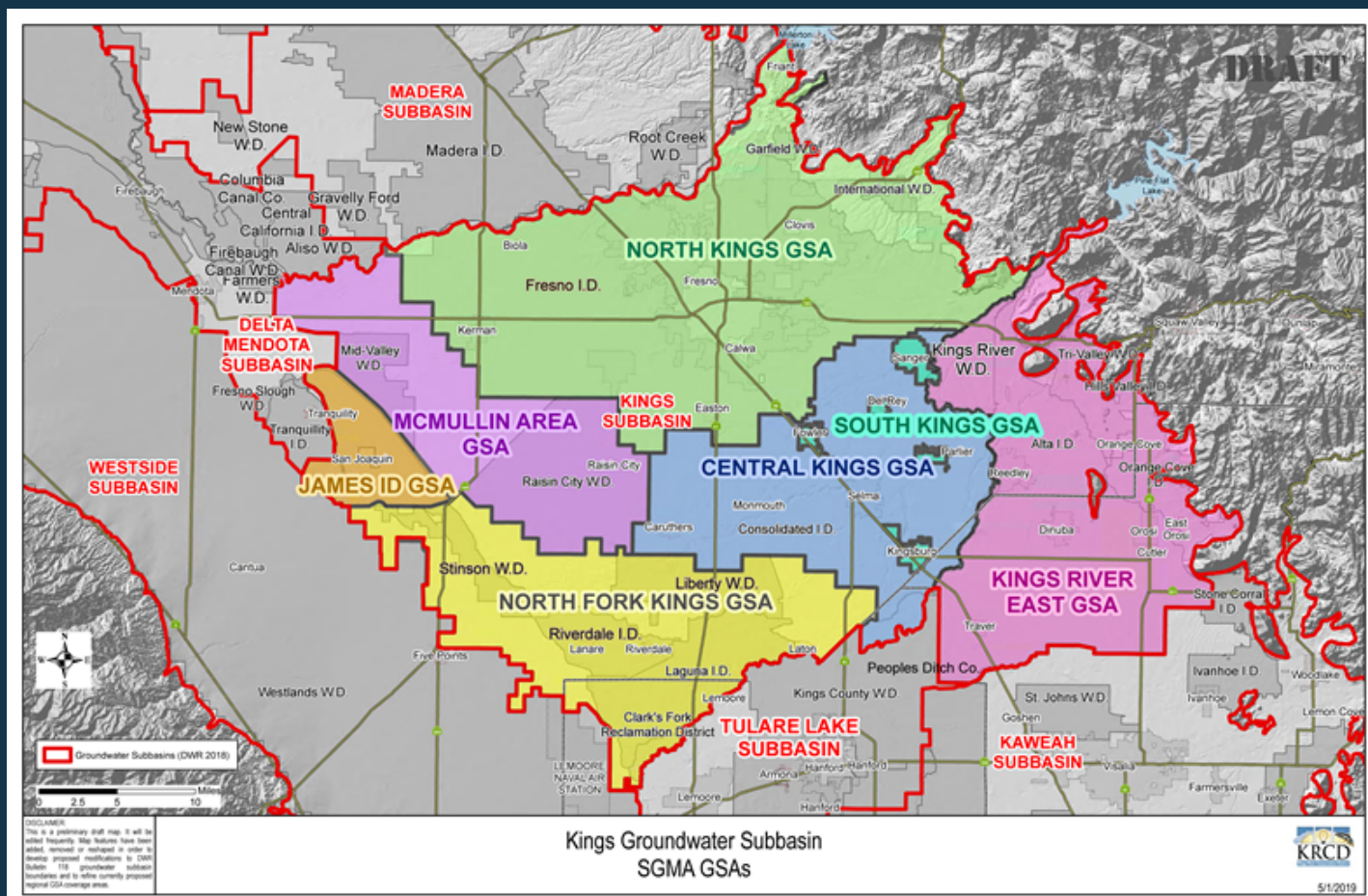


# ANNUAL REPORT

## KINGS SUBBASIN

WATER YEAR 2020 (OCT '19 - SEPT '20)



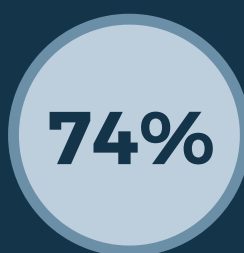
TOTAL SURFACE  
WATER SUPPLY =  
958,000 ACRE FEET



TOTAL GROUNDWATER  
EXTRACTED =  
1.35 MILLION ACRE FEET



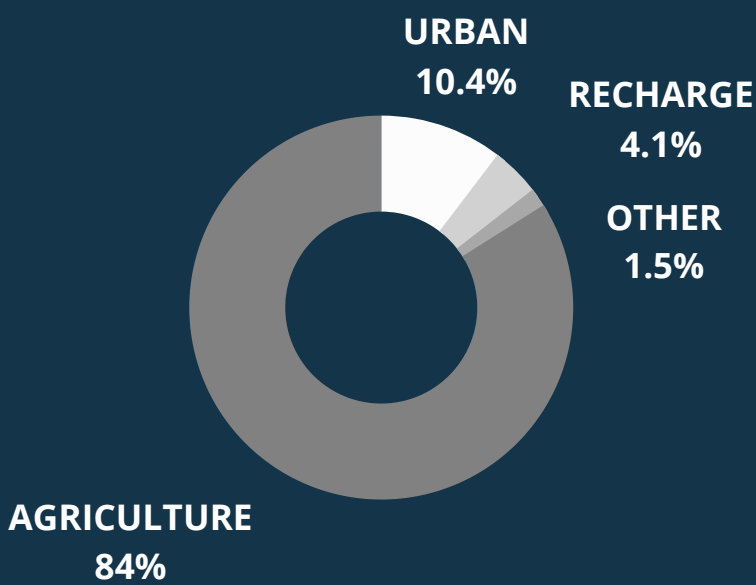
GROUNDWATER  
STORAGE DECREASE =  
550,000 ACRE FEET



PERCENTAGE OF  
HISTORIC AVERAGE  
DIVERSIONS ON THE  
KINGS RIVER

TOTAL SURFACE & GROUNDWATER USE =  
2.3 MILLION ACRE FEET

Surface & Groundwater Use by Sector



2019

2020

2.7 MAF | 2.3 MAF

total water use

39%

59%

of total water use was groundwater

150%

74%

of historic avg. diversions on  
Kings River

+210K

-550K

groundwater storage change

**96,000**

ACRE FEET RECHARGED  
BACK INTO THE  
GROUNDWATER