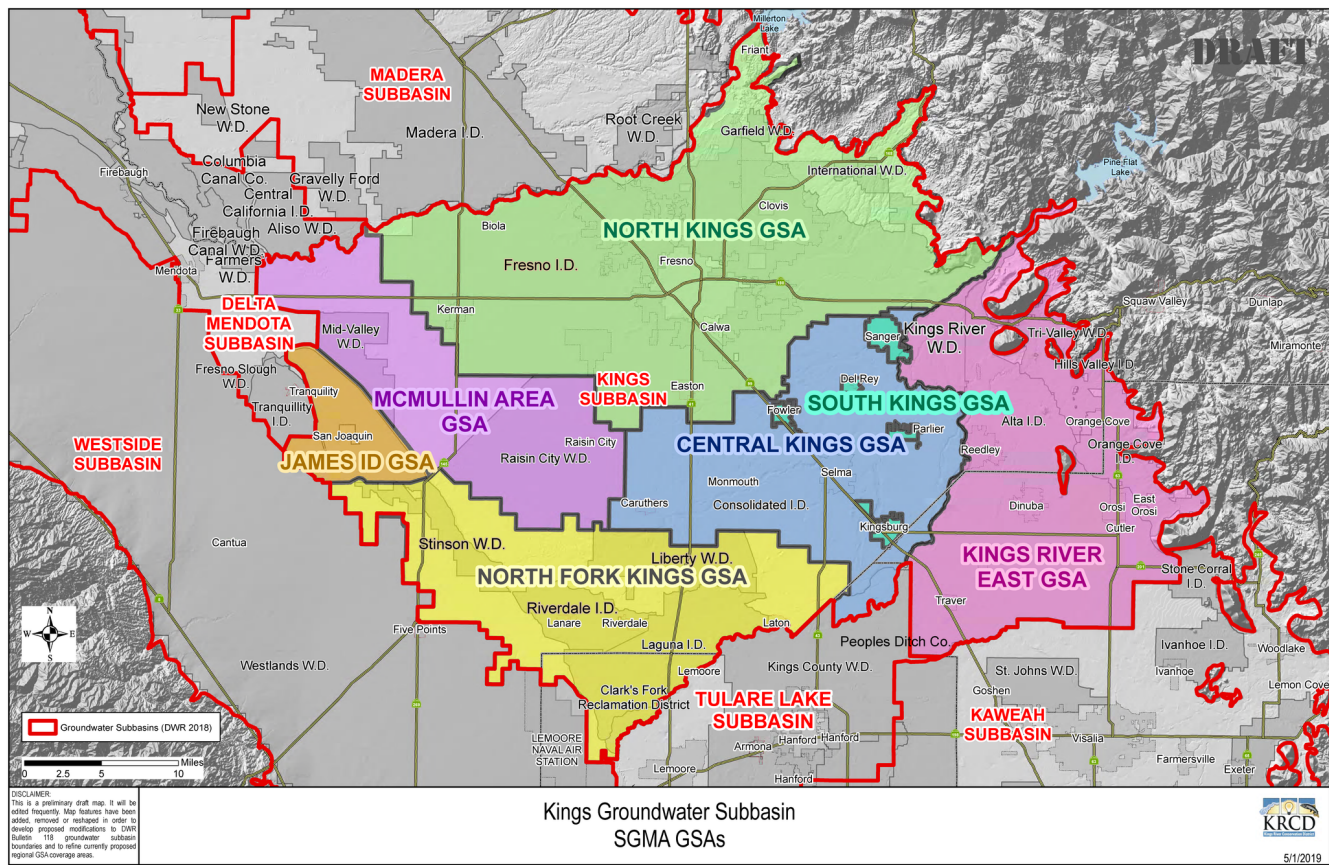


ANNUAL REPORT KINGS SUBBASIN

WATER YEAR 2019 (OCT '18 - SEPT '19)



TOTAL SURFACE
WATER SUPPLY =
1.64 MILLION ACRE
FEET



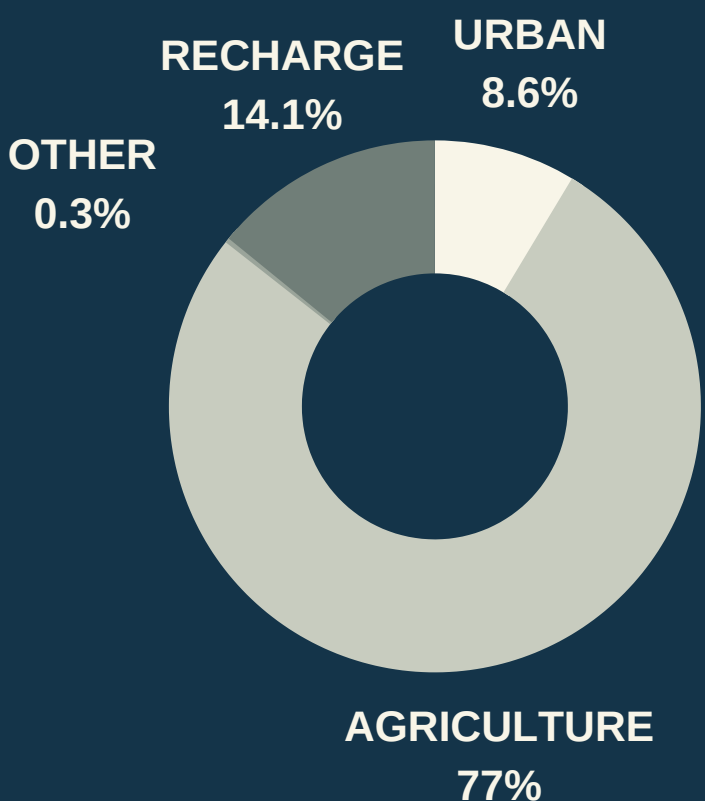
TOTAL GROUNDWATER
EXTRACTED =
1.06 MILLION ACRE
FEET



GROUNDWATER
STORAGE INCREASE =
210,000 ACRE FEET



PERCENTAGE OF
HISTORIC AVERAGE
DIVERSIONS ON THE
KINGS RIVER



TOTAL SURFACE
&
GROUNDWATER
USE BY SECTOR
—
2.7 MILLION ACRE
FEET

381,436

ACRE FEET RECHARGED
BACK INTO THE
GROUNDWATER

Note: Numbers reported are estimates based on best available data