



North Fork Kings GSA Special Board Meeting / Public Hearing

Review of Draft GSP Revisions in Response to DWR comments on GSP

7-14-2022

Topics

- DWR Determination
- Schedule
- Approach to address DWR Comments on GSP
- Summary of main GSP Revisions
- Other GSP Revisions
- Next Steps

Letter dated 1-28-2022 received from DWR
Incomplete Determination of the 2020 GSPs Submitted for
the SJV-Kings Subbasin

What is an Incomplete Determination?

- An official determination by DWR that deficiencies identified in the GSP(s) were significant enough to preclude approval and must be addressed
- Regulations allow for these deficiencies to be addressed within 180 days

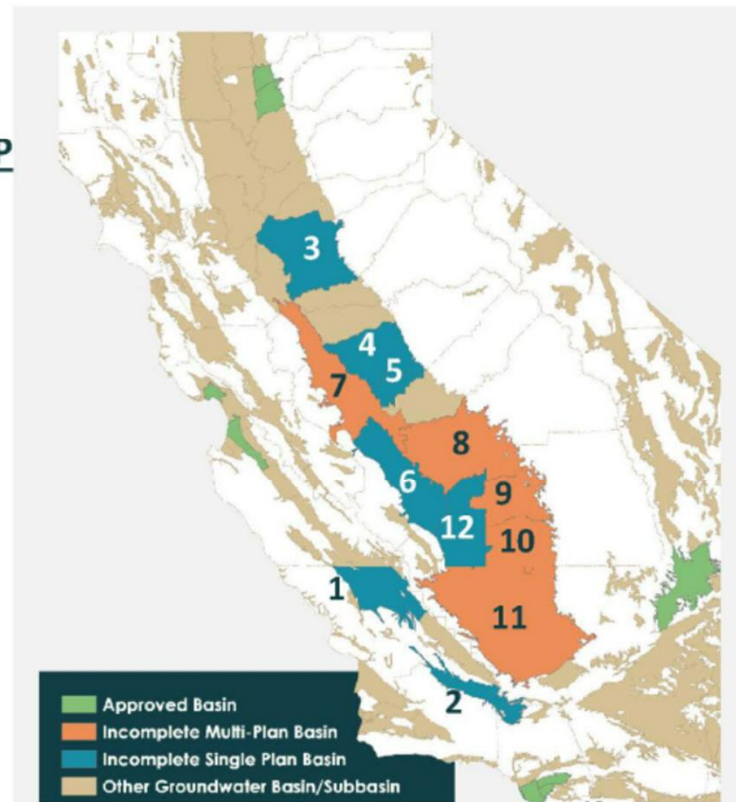
DWR GSP Determinations

Groundwater Sustainability Plans Determinations

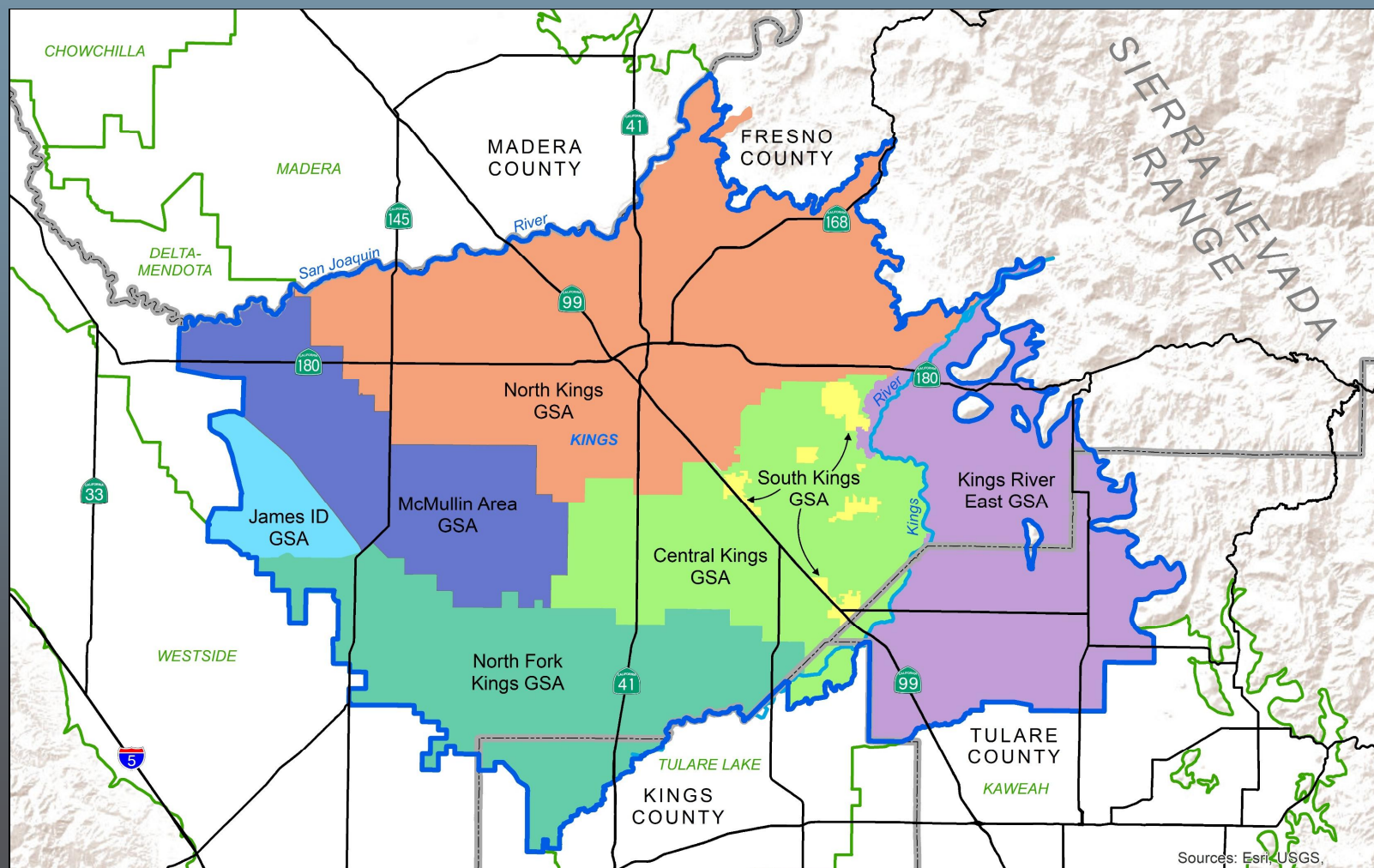
12
incomplete
basins
out of 20

Incomplete Basins:

	<u>GSA</u>	<u>GSP</u>
1. Paso Robles Subbasin-----	4	1
2. Cuyama Valley Basin-----	1	1
3. Eastern San Joaquin Subbasin-----	16	1
4. Merced Subbasin-----	3	1
5. Chowchilla Subbasin-----	4	1
6. Westside Subbasin-----	2	1
7. Delta Mendota Subbasin-----	23	6
8. Kings Subbasin-----	7	7
9. Kaweah Subbasin-----	3	3
10. Tule Subbasin-----	7	6
11. Kern Subbasin-----	11	5
12. Tulare Lake Subbasin-----	5	1



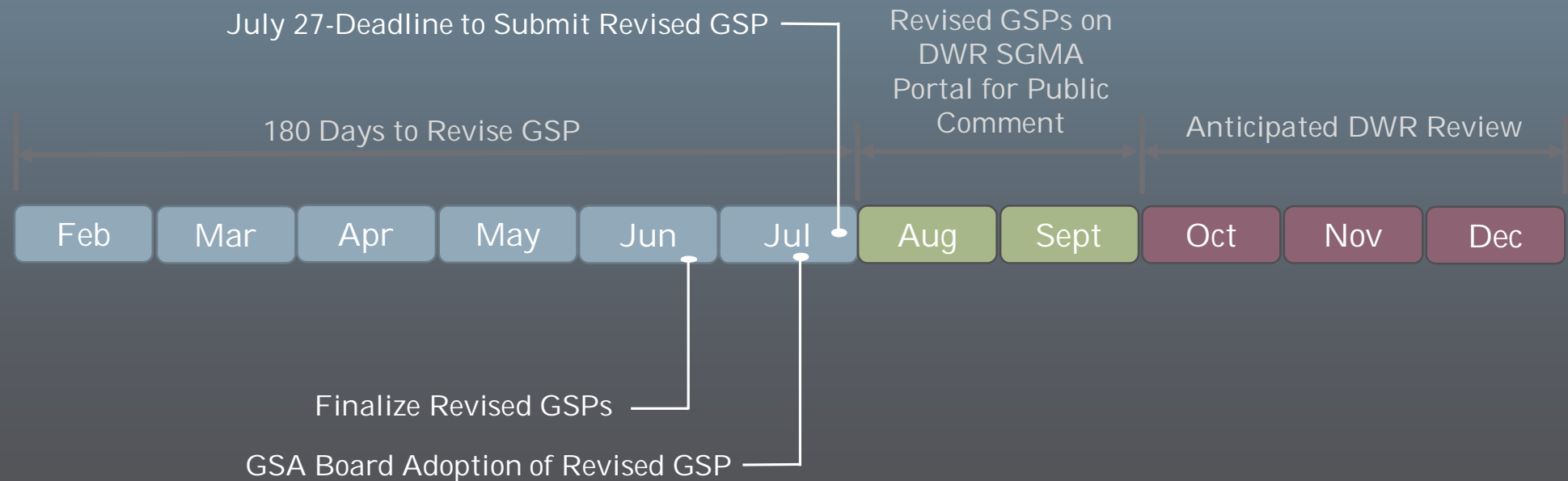
Kings Subbasin GSAs



Schedule

Assumptions:

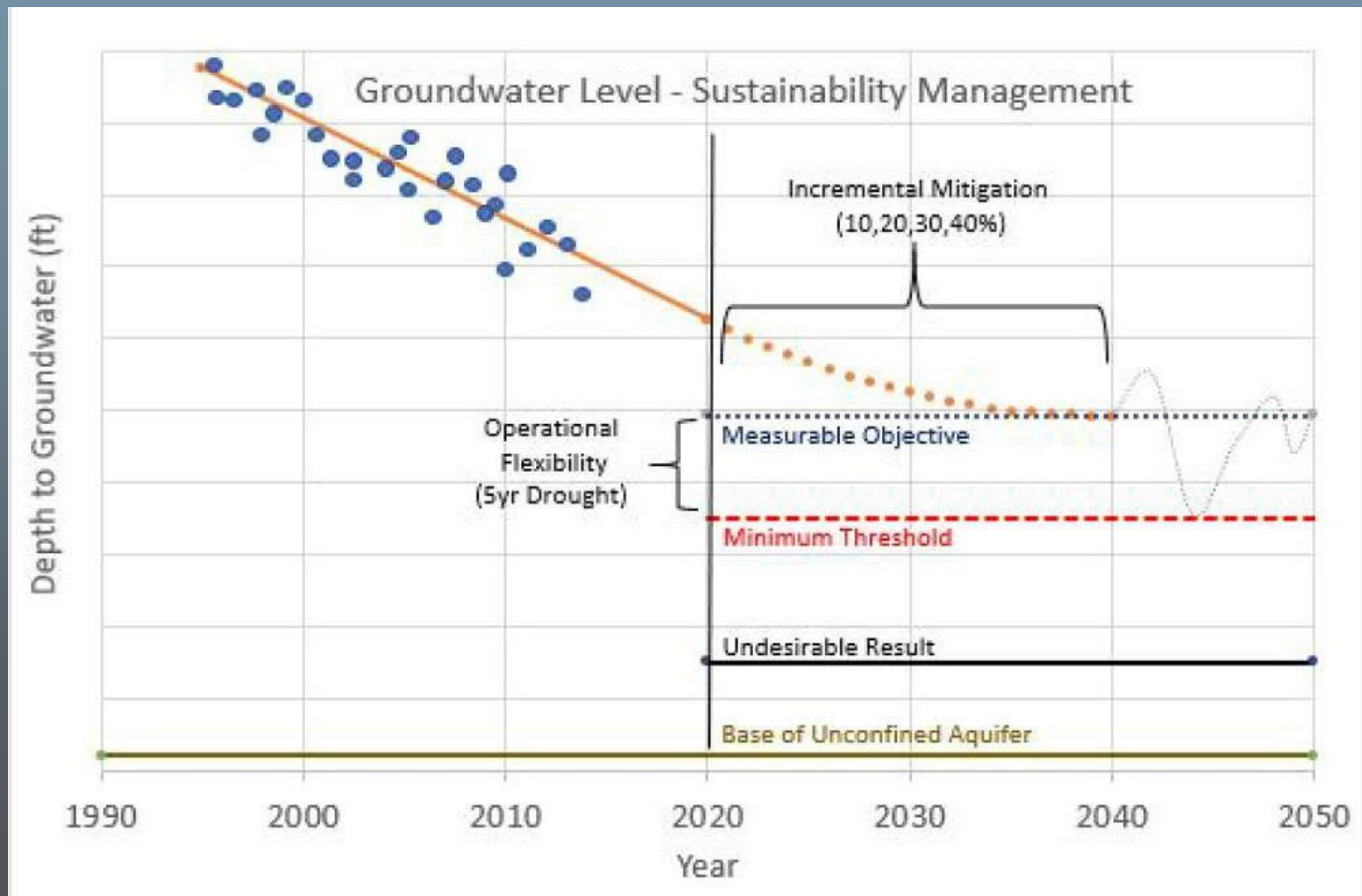
- GSAs to adopt revised plans at public meeting
- Utilize DWR Public Comment Period after submittal



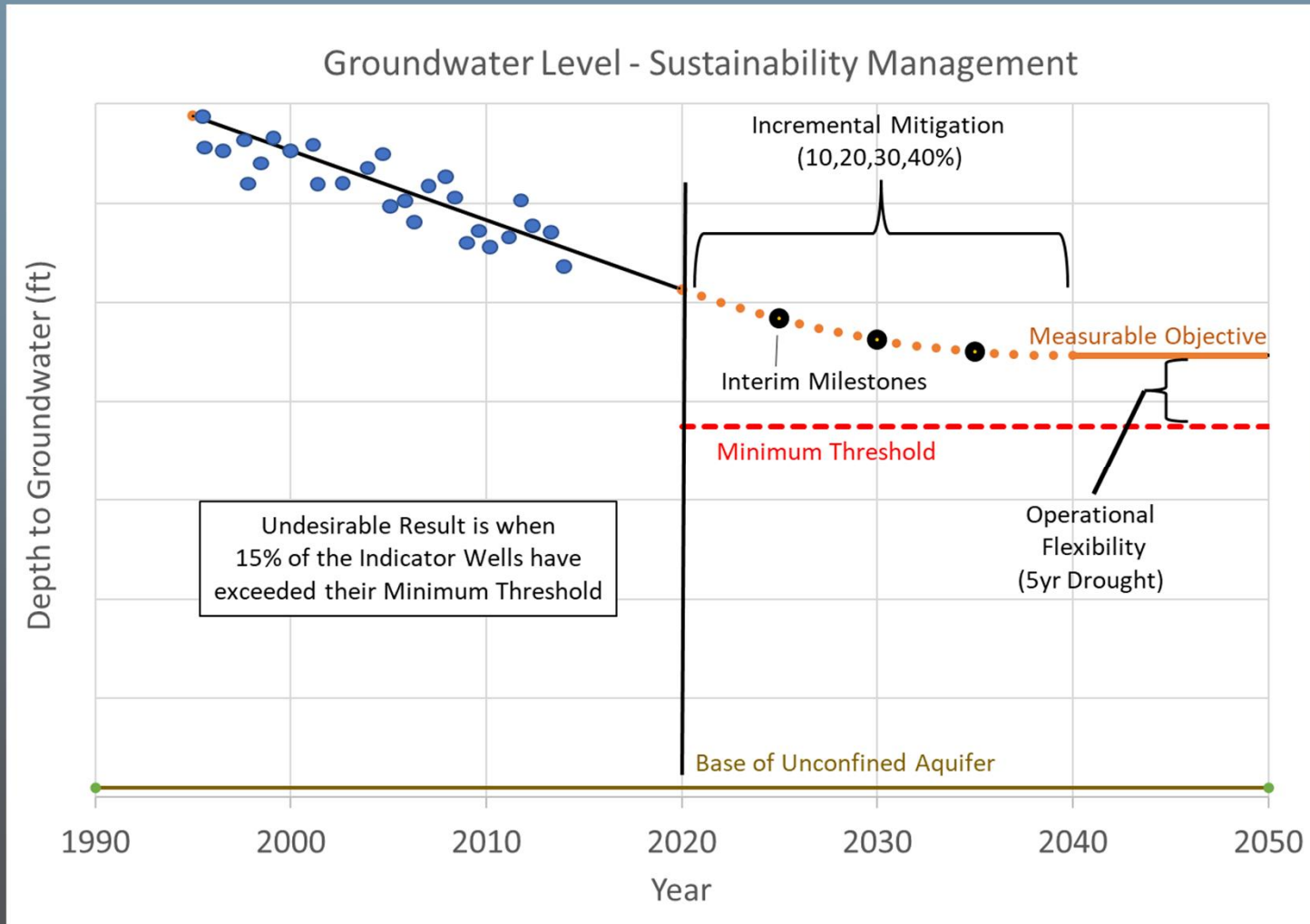
Approach to Address DWR Comments

- Most comments require Basin-wide coordination
- Need for language/approach consistency in all revised GSPs
- All comments tied to Sustainable Management Criteria (SMCs)
- Main criticism was regarding definition of Undesirable Results and providing justification considering beneficial uses and users of groundwater
- Four areas of deficiencies identified:
 - Chronic lowering of groundwater levels
 - Land subsidence
 - Interconnected surface water
 - Groundwater quality

Groundwater Level SMC in Adopted GSP



Groundwater Level SMC Revisions



Approach to Address DWR Comments

- Revisions developed thru Kings Basin Coordination Group
- Representatives from each GSA met regularly since Feb
 - Met multiple times with DWR staff to review proposed revisions
 - Coordination group developed draft language/changes
- Draft GSP revision language send to GSAs for review/input
 - NFKGSA Technical Advisory Group met multiple times
 - Draft language provided for review/comment
 - Recommended changes from TAG addressed
 - Revisions shown in track changes
- Main changes in Chapter 4 (Sustainable Management Criteria)
- Chapter 6 – added data gap projects & well mitigation

Summary of main GSP Revisions

- Revised Undesirable Results definition
- Reordered some sections to “tell the story” upfront
- Water Level
 - Did not change “glide path” approach – reduce overdraft over time to achieve sustainability with incremental mitigation
 - Focused on Impacts to Beneficial User/Uses
 - Addressing potential impacts with Domestic well mitigation program
- Land Subsidence
 - Focused on impacts to gravity flow canals/rivers & loss of capacity
 - Recognize data gaps of understanding pumping from lower aquifer
 - Emphasized we can only minimize/eliminate within our control

Land Subsidence



InSAR Land Subsidence

California's Groundwater Live

Filter by County

All

Filter by Groundwater Basin

All

Select a Water Year

WY 2016 (10/1/15 to 10/1/16)

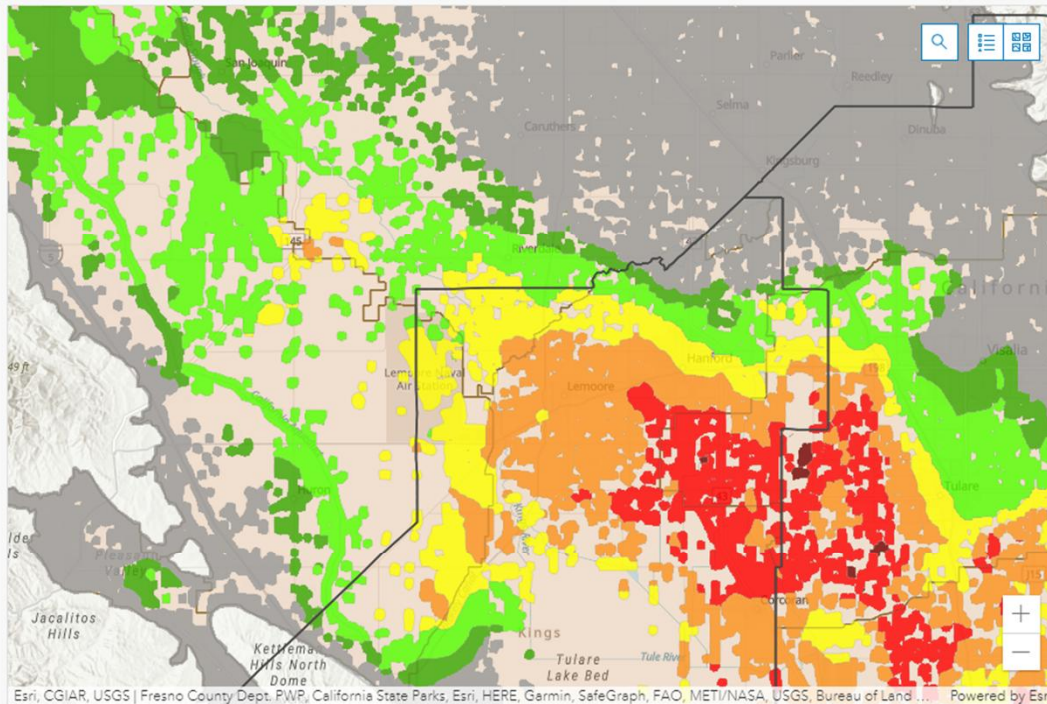
WY 2017 (10/1/16 to 10/1/17)

WY 2018 (10/1/17 to 10/1/18)

WY 2019 (10/1/18 to 10/1/19)

WY 2020 (10/1/19 to 10/1/20)

• WY 2021 (10/1/20 to 10/1/21)



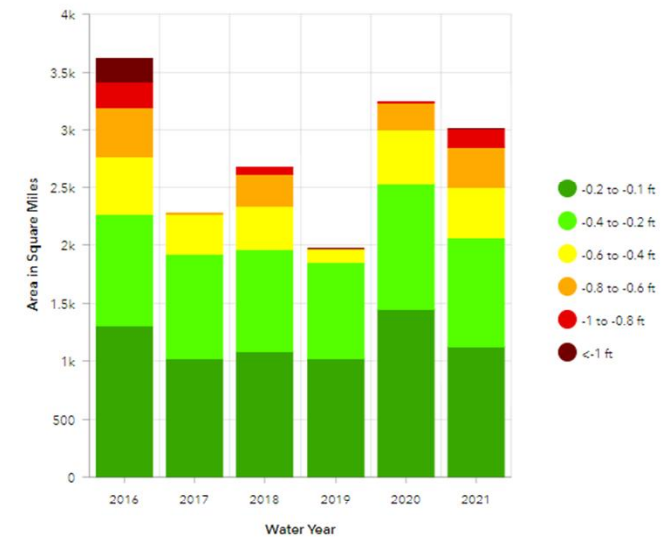
To view the latest quarterly land subsidence data for the current water year please visit the [SGMA Data Viewer](#).

[Click here](#) to learn how to use this dashboard.

[Click here](#) to learn more about how this dashboard was created.

You may only apply a boundary filter by County or Groundwater Basin individually (not both at the same time). In the event of a data error, please make sure to reset all filters.

Area in Square Miles by Annual Vertical Displacement Rate



Area with measured annual subsidence rate >0.1 feet for selected Water Year

3k
Square Miles

Summary of main GSP Revisions

- Water Quality
 - Utilize existing monitoring of public water systems
 - Clarified MT for wells already over the MCL will be 20% increase above historical high
- Interconnected Surface Water
 - Identified as a data gap, particularly extent of area of potential impact within Kings Subbasin (believed to be outside NFKGSA)
 - Referenced coordination with existing programs such as the Kings River Fisheries Management Program
 - Use water level from nearby wells as proxy for Interim SMCs; need to refine SMCs by 2025 based on data gap study

Other GSP Revisions

- Monitoring Network (Chapter 5)
 - Add additional language to note that monitoring network will be modified/improved over time
 - One water level SMC indicator well has gone dry, but sufficient coverage exists in area
 - Some access issues with a few other indicator wells
 - Looking for construction information of wells with historical data
 - Water quality indicator well network needs to be reviewed before 5-year update

Next Steps

- Revised GSP to be adopted at special Board meeting 7/14
- Accept revisions, assemble final document, and submit prior to 7/27

Questions?